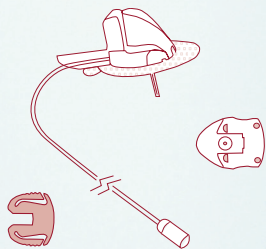


neria™ soft 90 infusion sets



Product Specifications

Cannula material:	Soft
Insertion angle:	90 degrees (straight in)
Disconnection:	Yes at site
Introducer needle gauge:	G27
Soft cannula diameter:	0.68 mm
Soft cannula lengths:	6 or 9 mm
Tubing lengths:	30, 60 or 110 cm
Adhesive:	Built-in
Needle safety:	Yes, active needle safety system

Soft cannula lengths

- 6 mm
- 9 mm

Tubing lengths

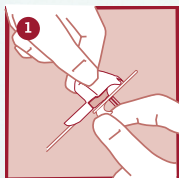
- 30 cm
- 60 cm
- 110 cm

The neria™ soft 90 infusion sets are sold in boxes containing 10 sets. Soft cannulae and tubing are also sold separately – in boxes containing 10 pcs/box.

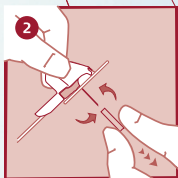
Fact Card

Distributed by: Clinect Pty Ltd
Email: neria@clinect.com.au
Phone: +61 3 9918 5555

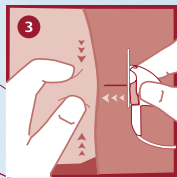
neria™ soft 90 infusion sets user steps



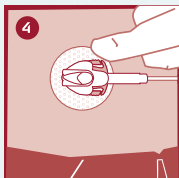
Pull gently to remove the backing paper.



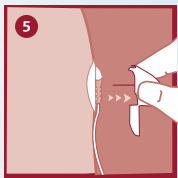
Gently twist and pull to remove the needle guard.



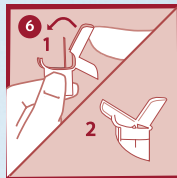
Pinch the skin and insert the neria™ soft 90 infusion set at a 90 degree angle (straight in).



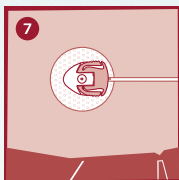
Press the adhesive onto the skin.



Remove the introducer needle by gently pulling the insertion handle straight up.



Secure the introducer needle by closing the insertion handle to cover the needle.



Check the infusion site frequently.

Please note that this guide only illustrates some of the steps to follow when inserting the neria™ soft 90 infusion sets and it is not a substitute for reading the instructions for use which comes with the product.

neria is a trademark of Unomedical a/s

©2013 Unomedical a/s
AP-01-3391-MM