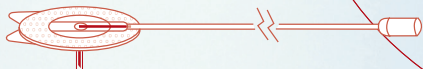


neria™ infusion sets



Product Specifications

Cannula:	Stainless Steel
Insertion angle:	90 degrees (straight in)
Disconnection:	No
Needle gauge:	G27 or G29
Needle lengths:	6, 8, or 10 mm
Tubing lengths:	60, 80 or 110 cm (23", 31" or 43")
Adhesive:	Built-in

Gauge size

- G27
- G29

Needle lengths

- 6 mm
- 8 mm
- 10 mm

Tubing lengths

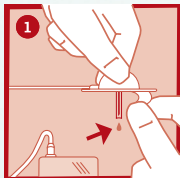
- 60 cm - 23"
- 80 cm - 31"
- 110 cm - 43"

The neria™ infusion sets are sold in boxes containing 10 sets.

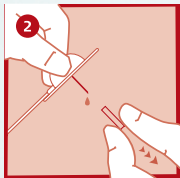
Fact Card

Distributed by: Clinect Pty Ltd
Email: neria@clinect.com.au
Phone: +61 3 9918 5555

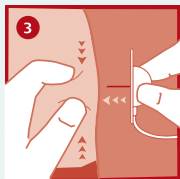
neria™ infusion sets user steps



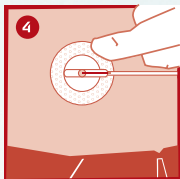
Prime the tubing according to pump manufacturer's instructions for use and remove the adhesive backing.



Remove the needle guard.



Pinch the skin with one hand and insert neria™ infusion set vertically.



Press the adhesive to secure neria™ infusion set to the skin.

Please note that this guide only illustrates some of the steps to follow when inserting the neria™ infusion sets and it is not a substitute for reading the instructions for use which comes with the product.

neria is a trademark of Unomedical a/s