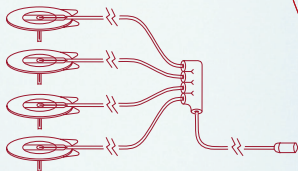


neria™ multi infusion sets



Product Specifications

Configurations:	Single set, Bi-, Tri-, Quad-furcated sets
Cannula:	Stainless Steel
Insertion angle:	90 degrees (straight in)
Disconnection:	No
Needle gauge:	G27
Adhesive:	Built-in
Clamp:	Yes

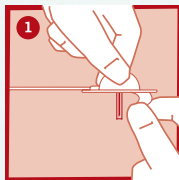
	Single Set	Bi-furcated	Tri-furcated	Quad-furcated
Needle lengths	6, 8 and 10 mm	8 and 10 mm	8, 10 and 12 mm	8, 10 and 12 mm
Tubing lengths	60, 80, 110 cm	Total 90 cm	Total 90 cm	Total 90 cm
Priming volume	60 cm - 0.10 ml 80 cm - 0.13 ml 110 cm - 0.18 ml	0.36 ml	0.43 ml	0.51 ml

The neria™ multi infusion sets are sold in boxes containing 10 sets.

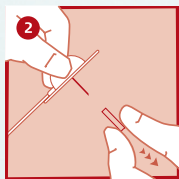
Fact Card

Distributed by: Clinect Pty Ltd
Email: neria@clinect.com.au
Phone: +61 3 9918 5555

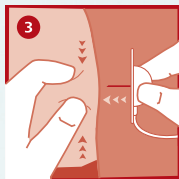
neria™ multi infusion sets user steps



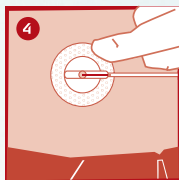
Remove the adhesive backing paper.



Remove the needle guard.



Pinch the skin with one hand and insert the neria™ multi infusion set vertically.



Press the adhesive to secure the neria™ multi infusion set to the skin.

Repeat steps 1-4 for all sites.

Please note that this guide only illustrates some of the steps to follow when inserting the neria™ multi infusion sets and it is not a substitute for reading the instructions for use which comes with the product.

neria is a trademark of Unomedical a/s